

Building Trades Union Apprenticeship Readiness Training

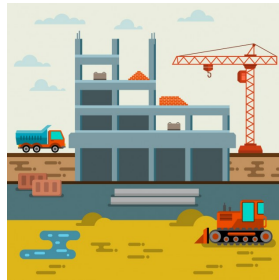
**PROGRAM STARTS
APRIL 14TH, 2020**

Interested in joining one of these trades?

- Bricklayers
- Carpenters
- Tilesetters
- Plasterers
- Plaster Tenders
- Laborers
- Electricians
- Plumbers & Pipefitters
- Sprinklefitters
- Steamfitters
- Roofers & Waterproofers
- Heat & Frost Insulators
- Iron Workers
- Sheet Metal Workers
- Operating Engineers
- Cement Masons
- Painters
- Drywall Finishers
- Glaziers
- Floorlayers
- Tradeshow & Signcrafts

Requirements

- Interest in a career in the construction trades
- Physically able to work on a construction site
- HS Diploma/GED/GED program enrollment
- 7th grade Math/English skill level
- Ability to work in the U.S.
- Reliable transportation



MUST ATTEND AN ORIENTATION BEFORE ENROLLING

Training Schedule: 4/14/20 - 6/4/20

Days: Monday - Thursday

Time: Approx. 7:30am to 3:00pm

Location: Los Angeles Mission College

Address: 13356 Eldridge Ave. Sylmar 91342

Contact us for more information

Sarah Sandoval

Sandoval_sarah@lacoecol.edu

(661)298-0152

- Completion of the Multi-Craft Core Curriculum (MC3)
- Learn the process of applying to a construction trades apprenticeship program
- Learn about tools and materials
- Review basic math for construction
- Receive information about green construction
- Earn OSHA 10 Hour Safety Training
- Demonstrate basic First Aid and CPR
- Write a professional resume
- Display proper interviewing etiquette



**APPRENTICESHIP
READINESS FUND**

LOS ANGELES/ORANGE COUNTIES
BUILDING & CONSTRUCTION TRADES COUNCIL AFL-CIO



**Los Angeles County
Office of Education**

GSW Section

Use code 47-2061 (Construction Laborers)

City: Sylmar

Provider: LACOE

Liaison: Sarah Sandoval

Contact: Sandoval_Sarah@lacoecol.edu

CB: SS 2/28/20

For more information go to:

LACOEGAIN.ORG/SHORTTERMTRAININGS



@lacoegainstt

This program is presented, in collaboration, by the Los Angeles Mission College Career and Workforce Education and Adult and Basic Skills Education Departments, Los Angeles County Office of Education, Los Angeles/Orange Counties Building & Construction Trades Council and sponsored by the California Community College Strong Workforce Program.